

PRODUCT CATALOG

2026

Contents

- 3 - ABOUT US
- 4 - QUICK ESSENTIALS
- 6 - BEDROOM
- 15 - LIVING ROOM
- 19 - DINING AND SEATING
- 24 - UPHOLSTERY
- 31 - FINISH OPTIONS
- 34 - ACCESSORIES AND UPGRADES
- 35 - MUMA BY SMARTER FURNISHINGS
- 46 - WARRANTY
- 48 - CONTACT US



Markets

Collegiate & University

- On-Campus
- Off-Campus

Hospitality



About Us

For the Moments That Matter

Every space tells a story. At Smarter Furnishings, we believe furniture is more than something you use—it's the heart of every space and the foundation for the moments that matter most. From the first dorm room that sparks independence to the common areas where friendships are forged, our furniture quietly shapes the experiences people carry with them.



Built from the Inside Out

Our journey began with Johnny Tipton, whose vision and values continue to guide us. For over 30 years, we've partnered with student housing professionals, hospitality leaders, and property developers to create spaces that feel complete from day one.



We know what's at stake: timelines to hit, budgets to honor, and people waiting to feel at home. That's why our process balances big-picture execution with an attentive focus on every detail—agile planning, quality craftsmanship, and reliable deliveries that make things easier for you.

Our Promise

We're here to set a new standard for partnership—one that's remembered for how it makes people feel, the connections it fosters, and the memories it creates. With best-in-class care behind every detail, we help you create smarter spaces with intention, built not just for today's moments, but for all the moments to come.



SMARTER FURNISHINGS

Quick Essentials

FAST & RELIABLE

Smarter Furnishings' Quick Ship program offers stylish, durable pieces that are ready to ship. Quick Ship makes it easy to get high-quality furniture without the wait.

CHECK OUT OUR WEBSITE FOR THE COMPLETE LIST OF QUICK SHIP PRODUCTS:



Quick Essentials



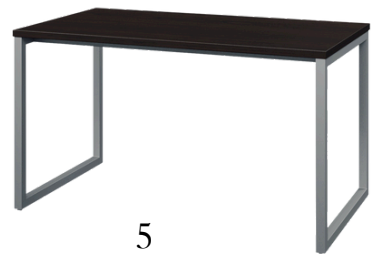
1



2



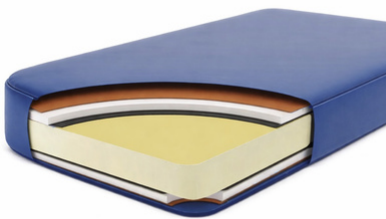
3



5



4



6



7



8

1 - Metal Dining Chair | 2 - Keystone Sofa | 3 - Freestanding Bed | 4 - Bent Plywood Chair | 5 - Apex Coffee Table | 6 - Nylon Mattress | 7 - Apex Writing Desk | 8 - Cornerstone Chest

Bedrooms

BUILT FOR LIFE'S DAILY USE—AND
THE MOMENTS THAT MATTER

The bedroom collection combines durability, function, and comfort to create spaces that feel like home. From fully welded, adjustable bed frames to versatile dressers, nightstands, and desks, each piece is designed for long-lasting performance in student living environments. Coordinated finishes and practical storage solutions ensure both style and efficiency in every room.

Bookcases and Pedestals



FR-BK2

**FRANKLIN 2-SHELF
BOOKCASE**
24W x 15D x 30H



FR-BK3

**FRANKLIN 3-SHELF
BOOKCASE**
24W x 15D x 36H



FR-BK4

**FRANKLIN 4-SHELF
BOOKCASE**
24W x 15D x 48H



FR-BK5

**FRANKLIN 5-SHELF
BOOKCASE**
24W x 15D x 60H



AC-BK2

ACACIA BOOKCASE
18W x 20D x 18H

Also available with casters!



FR-MP1-01

**POWERED MOBILE
PEDESTAL WITH
EXTENDABLE SHELF**
18W x 20D x 22H



FR-MP1S1

**MOBILE PEDESTAL
WITH SHELF**
16W x 22D x 22H



FR-MP2

**MOBILE PEDESTAL
WITH 2-DRAWERS**
16W x 22D x 22H
16W x 24D x 30H



FR-MP3

**MOBILE PEDESTAL
WITH 3-DRAWERS**
18W x 24D x 30H

Beds



WOOD ADJUSTABLE HEIGHT BED

BX-BED1-TXL (Sinuous)
38W x 85D x 36H
BX-BED2-TXL (Tubular)
38W x 85D x 36H



LOFT KIT-WOOD

BX-LKIT-TXL
38W x 85.77D x 36H



WOOD LOFT BED

BX-LFT60-TXL
38W x 85.77D X 60H

Safety Rail Required



WOOD ADJUSTABLE HEIGHT BUNK BED

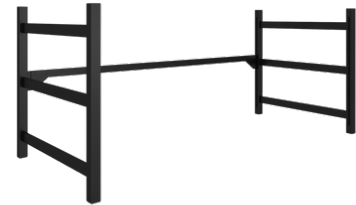
BX-BNK1-TXL72
38W x 85.77D x 72H

Safety Rail Required



METAL ADJUSTABLE HEIGHT BED

AX-BED1-TXL (Sinuous)
38W x 85D x 36H
AX-BED2-TXL (Tubular)
38W x 85D x 36H



LOFT KIT-METAL

AX-LKIT-TXL
38W x 85.77D x 36H



METAL LOFT BED

AX-LFT60-TXL
38W x 85.77D X 60H

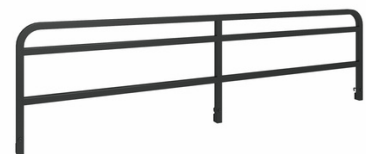
Safety Rail Required



METAL ADJUSTABLE HEIGHT BUNK BED

AX-BNK1-TXL72
38W x 85.77D x 72H

Safety Rail Required



SAFETY RAIL

SRL-B01
65W x 1D x 17.95H
SRL-B02
55.75W x 1D x 17.95H

Beds



FREESTANDING BED

FS-T-397522-HV
39W x 75D x 22H
FS-F-537522-HV
53W x 75D x 22H
FS-F-538022-HV
53W x 80D x 22H
FS-Q-608022-HV
60W x 80D x 22H



APEX HEADBOARD ON FREESTANDING BED

AX-BED-TXLHV-22
39W x 80D x 22H
AX-BED-FHV-22
53W x 75D x 22H
AX-BED-FXLHV-22
53W x 80D x 22H
AX-BED-QHV-22
60W x 80D x 22H



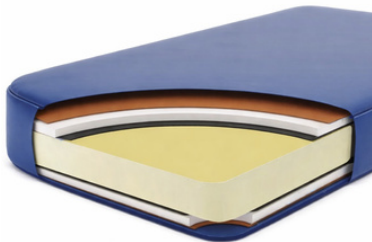
TUBULAR DECK

BFA-
Offered in Twin, Twin XL,
Full, Full XL, & Queen



SINUOUS SPRING

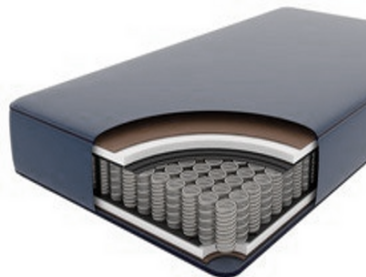
SPA-
Offered in Twin, Twin XL,
Full, Full XL, & Queen



MTS-FR

FOAM ROLLED MATTRESS

Offered in Twin, Twin XL,
Full, Full XL, & Queen



MTS-NJ

DOUBLE SIDED NYLON MATTRESS

Offered in Twin, Twin XL,
Full, Full XL, & Queen



Chests



FR-CH2S

FRANKLIN STACKABLE CHEST

30W x 18D x 18H
30W x 24D x 18H



FR-CH3

FRANKLIN 3-DRAWER CHEST

30W x 24D x 30H
36W x 24D x 30H



FR-CH4

FRANKLIN 4-DRAWER CHEST

34W x 18D x 36H



FR-CH5

FRANKLIN 5-DRAWER CHEST

24W x 24D x 45H



COR-CH2

CORNERSTONE 2-DRAWER CHEST

30W x 18W x 18D
30W x 24W x 18D



AX-CH3

APEX 3-DRAWER CHEST

36W x 24D x 30H



AX-CH4

APEX 4-DRAWER CHEST

34W x 18D x 36H



AX-CH6

APEX 6-DRAWER CHEST

54W x 18D x 36H



LX-CH4

LENOX CHEST 4-DRAWERS

34W x 18D x 36H



AC-CH2

ACACIA 2-DRAWER CHEST

26W x 20D x 18H



SAX-CH3

SAXMAN CHEST 3-DRAWERS

30W x 20D x 30H



SAX-CH6

SAXMAN CHEST 6-DRAWERS

54W x 20D x 30H

Nightstands



FR-NS1

NIGHTSTAND WITH 1-DRAWER

18W x 18D x 26H



LX-NS1-01

LENOX NIGHTSTAND 1-DRAWER

18W x 18D x 26H



AX-NS1-01

APEX NIGHTSTAND WITH DRAWER

18W x 18D x 22H

18W x 18D x 26H



SAX-NS1

SAXMAN NIGHTSTAND 1-DRAWER

20W x 18D x 26H



SAX-NS2

SAXMAN NIGHTSTAND 2-DRAWERS

18W x 18D x 26H



DYL-NS1

DYLAN NIGHTSTAND WITH DRAWER

20W x 18D x 24H



Desks



FR-WD

FRANKLIN WRITING DESK

30W x 24D x 30H
36W x 24D x 30H
40W x 24D x 30H



FR-WD1-01

FRANKLIN 1-DRAWER DESK

36W x 24D x 30H
42W x 24D x 30H



FR-PD4

FRANKLIN PEDESTAL DESK 4-DRAWER

42W x 24D x 30H



FR-PD2S2

FRANKLIN PEDESTAL DESK

42W x 24D x 30H



AX-WD

APEX WRITING DESK

36W x 24D x 30H
40W x 20D x 30H



AX-WD1

APEX 1-DRAWER DESK

36W x 24D x 30H
40W x 20D x 30H



AX-WD2

APEX 2-DRAWER DESK

36W x 24D x 30H
40W x 20D x 30H



AX-PD2S2

APEX 2-DRAWER PEDESTAL DESK

42W x 24D x 30H



LX-WD1

LENOX DESK WITH 1-DRAWER

40W x 20D x 30H

Desks



SAX-WD

SAXMAN WRITING DESK

40W x 20D x 30H



SAX-WD1

SAXMAN WRITING DESK WITH DRAWER

40W x 20D x 30H



SAX-WDH3

SAXMAN WRITING DESK WITH HUTCH

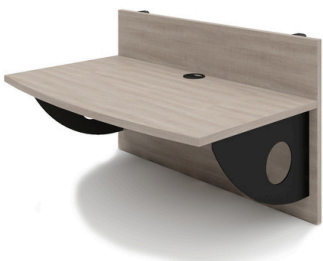
43W x 23D x 35H



AC-WD1

ACACIA WRITING DESK

34W x 22D x 30H



BAX-HWD

HOOK ON DESK

32W x 20D x 20H



DK-WD10C

DECKER WRITING DESK

42W x 24D x 32H



Wardrobes



FR-WR

WARDROBE

30W x 24D x 72H
36W x 24D x 72H



FR-WR1

1-DRAWER WARDROBE

36W x 24D x 72H



FR-WR2

2-DRAWER WARDROBE

36W x 24D x 72H



FR-WR3

3-DRAWER WARDROBE

36W x 24D x 72H



FR-1WR2

1 DOOR 2-DRAWER WARDROBE

24W x 24D x 72H

Living Units

STYLE THAT WELCOMES YOU HOME

The living unit collection blends comfort, durability, and timeless style to support daily use in high-traffic student environments. From versatile lounge seating and functional coffee tables to coordinated end tables and media units, each piece is built for long-lasting performance and designed to create inviting community spaces. With smart construction and modern finishes, these furnishings make shared living areas both practical and welcoming.

Coffee Tables



AX-CTR-01

APEX ROUND COFFEE TABLE

30W x 30D x 18H



AX-CT

APEX COFFEE TABLE

40W x 20D x 18H



AC-CTR

ACACIA COFFEE TABLE

30W x 18H



DK-CT

DECKER COFFEE TABLE

42W x 24D x 17H



EL-CTR

ELLINGTON COFFEE TABLE

30W x 30D x 17H



LIFT-D-CTR

3 LEG COFFEE TABLE

36W x 36D x 18H



LX-CT-402018

LENOX COFFEE TABLE

40W x 20D x 18H



RLY-CTR

RILEY COFFEE TABLE

32W x 32D x 18H



SAX-CTR-01

SAXMAN ROUND COFFEE TABLE

30W x 30D x 18H

End Tables



AX-ET

APEX END TABLE
20W x 20D x 20H



AX-CTT

APEX C TRAY TABLE
18W x 18D x 25H



AX-ET-01

APEX END TABLE WITH SHELF
18W x 18D x 26H



SAX-ETR-01

SAXMAN ROUND END TABLE
20W x 20D x 20H



DK-ET

DECKER END TABLE
20W x 20D x 20H



LIFT-D-ETR

LIFT D END TABLE
20W x 20D x 20H



AC-ETR

ACACIA END TABLE
20W x 20D x 20H



LIFT-D-AT

LIFT D END TABLE
19W x 19D x 22H

Media Units



AX-MU2

APEX MEDIA UNIT
40W x 18D x 36H



AX-MU

APEX MEDIA UNIT
40W x 18D x 24H



LX-MU-01

LENOX MEDIA UNIT
48W x 19D x 22H



AC-MU

ACACIA MEDIA UNIT
42W x 18D x 24H



SAX-MU

SAXMAN MEDIA UNIT
48W x 18D x 30H



SL-MU

STERLING MEDIA UNIT
40W x 18D x 24H



DK-MU

DECKER MEDIA UNIT
48W x 14D x 20H



DYL-MUSD

DYLAN MEDIA UNIT
48W x 24D x 22H

Dining & Seating

DESIGNED TO BRING PEOPLE TOGETHER

Gather in style with our Dining & Seating collection—where form meets function. From sleek tables to comfortable, design-forward chairs, each piece is crafted to elevate everyday meals and memorable moments alike.

Dining Tables



AX-DT

APEX DINING TABLE

30W x 30D x 30H
36W x 36D x 30H
32W x 48D x 30H



AX-DTR-X

APEX DINING TABLE ROUND WITH X BASE

36W x 36D x 30H



AX-CRT

COUNTER HEIGHT TABLE

40W x 20D x 36H



AC-DT

ACACIA DINING TABLE

36W x 36D x 30H
48W x 30D x 30H



LIFT-E-DT

DINING TABLE

36W x 36D x 30H



SAX-DT

SAXMAN DINING TABLE

36W x 36D x 30H



LX-DT

LENOX DINING TABLE

36W x 36D x 30H



Seating



DC-013

BUNSEN CHAIR

21W x 18D x 33H- 18 SH



DC-038S

DERBY CHAIR

23W x 23D x 30H- 18 SH



IO CHAIR

IO CHAIR

18W x 19D x 31H



DC-012

BENT PLYWOOD

21W x 20D x 32H- 18 SH



DC-001

WOOD LADDER BACK

18W x 21D x 35H- 18 SH



DC-010

UPHOLSTERED METAL

20W x 22D x 33H- 18 SH



MTPC

METAL TWO POSITION CHAIR

17W x 17D x 32H- 18 SH



TPC

WOOD TWO POSITION CHAIR

20W x 26D x 34H- 18 SH



TPC-WBUS

WOOD UPHOLSTERED TWO POSITION CHAIR

20W x 26D x 34H- 18 SH

SEAT HEIGHT FOR DINING/DESK CHAIR IS 18"
COUNTER STOOL SEAT HEIGHT IS 25"
BAR STOOL SEAT HEIGHT IS 30"

Seating



DC-013-4L

BUNSEN CHAIR WITH 4 LEGS

21W x 18D x 33H- 18 SH



TC-NEXT

NEXT TASK CHAIR

26W x 24D x 38-41.75H



TPC-UBS

WOOD UPHOLSTERED SEAT & BACK TWO POSITION CHAIR

20W x 26D x 34H- 18 SH

Seating



CSB

WOOD BACKLESS COUNTER STOOL*

17W x 9D x 24H - 24 SH



MBCS

METAL BACKLESS COUNTER STOOL*

16W x 16D x 24H - 24 SH



CS-013-22

METAL LEGS BACKLESS COUNTER STOOL

15W x 15D x 23H - 23 SH



CS-IO

IO COUNTER STOOL

22W x 24D x 41H - 24 SH



CS-038S

DERBY COUNTER STOOL

23W x 24D x 36H - 24 SH



BS-038S

DERBY BAR STOOL

20W x 21D x 42H - 30 SH



BS-010

UPHOLSTERED METAL BAR STOOL

20W x 22D x 43H - 30 SH



CS-010

UPHOLSTERED METAL COUNTER STOOL

20W x 21D x 37H - 24 SH



BS-012

BENT PLYWOOD BAR STOOL

18W x 23D x 42H - 30 SH



CS-012

BENT PLYWOOD COUNTER STOOL

22W x 20D x 38H - 24 SH

SEAT HEIGHT FOR DINING/DESK CHAIR IS 18"
COUNTER STOOL SEAT HEIGHT IS 25"
BAR STOOL SEAT HEIGHT IS 30"

Upholstery

ELEGANCE & COMFORT

Crafted for comfort and built to last, our upholstery collection blends refined textures with clean lines and thoughtful details. From plush sofas to tailored accent chairs, each piece is designed to bring warmth, style, and effortless sophistication to your space.



LOUNGE CHAIRS



OCHARD PARK

OP-CHR

35W x 34.5D x 31H



DIANA

UDI-CHR

30.5W x 36D x 33H



JENSON

UJN-ACH

27.25W x 31D x 33H



GRAYSON

UGR-CHR

27.36W x 27.61D x 29.92H

Lexington



ULXT-OTTO-233019

LEXINGTON OTTOMAN
23W x 30D x 19H



ULXT-CHR

LEXINGTON LOUNGE CHAIR
34.25W x 33.27D x 35H



ULXT-LUV

LEXINGTON LOVESEAT
57.8W x 33.27D x 35H



ULXT-SOF78

LEXINGTON SOFA
78W x 33.27D x 35H



ULXT-SOF78-CHAISE

LEXINGTON SOFA WITH CHAISE
78W x 33.27D x 35H



ULXT-SEC-33

LEXINGTON SECTIONAL 3 X 3
87W x 87D x 35H



ULXT-SEC-34

LEXINGTON SECTIONAL 3 X 4
87W x 110D x 35H

Shift



USH-ACH

SHIFT ARMLESS CHAIR

22W x 31.5D x 31.5H



USH-LCHR

SHIFT LEFT ARM-FACING CHAIR

29W x 31.5D x 31.5H



USH-RCHR

SHIFT RIGHT ARM-FACING CHAIR

29W x 31.5D x 31.5H



USH-CHR

SHIFT TWO ARM CHAIR

36W x 31.5D x 31.5H



USH-LCWDG

SHIFT LEFT CORNER WEDGE

32W x 31.5D x 31.5H



USH-RCWDG

SHIFT RIGHT CORNER WEDGE

32W x 31.5D x 31.5H



USH-OTT

SHIFT OTTOMAN

22W x 31.5D x 19H



USH-ROTT

SHIFT RADIUS OTTOMAN

16W x 31.5D x 19H



USH-45IS-WDG

SHIFT 45 INSIDE WEDGE

28.5W x 29.5D x 31.5H



USH-45OS-WDG

SHIFT 45 OUTSIDE WEDGE

28.5W x 29D x 31.5H



USH-22IS-WDG

SHIFT 22 INSIDE WEDGE

25.5W x 31D x 31.5H

VINYL FABRIC
OPTIONS:



WOVEN FABRIC
OPTIONS:



Keystone



UKS-ACH

KEYSTONE ARMLESS CHAIR

23W x 35D x 35H



UKS-CHR

KEYSTONE LOUNGE CHAIR

35W x 35D x 35H



UKS-SEC-34

KEYSTONE SECTIONAL 3 X 4

87W x 110D x 35H



UKS-LUV

KEYSTONE LOVESEAT

58W x 35D x 35H



UKS-SOF

KEYSTONE SOFA

81W x 35D x 35H



UKS-SEC-33

KEYSTONE SECTIONAL 3 X 3

87W x 87D x 35H

Tier 1 Fabric Options:

- Cadet Grey
- Apache Chocolate
- Augusta Grey
- Black Vinyl
- Chestnut
- Graphite
- Greystone
- Gunmetal

Tier 2 Fabric Options:

- Lite Grey
- Slate



Keystone is available with removable and replaceable fabric as a Smart Solutions

Princeton



UPR-OTT

PRINCETON OTTOMAN

23W x 30D x 18H



UPR-ACH

PRINCETON ARMLESS CHAIR

23W x 34.5D x 35.5H



UPR-CHR

PRINCETON LOUNGE CHAIR

35.5W x 34.5D x 35.5H



UPR-LUV

PRINCETON LOVESEAT

57.5W x 34.5D x 35.5H



UPR-SOF

PRINCETON SOFA

80W x 34.5D x 35.5H



UPR-CHAISE

PRINCETON CHAISE SOFA

61W x 80D x 35.5H

Available in Left and Right Options!



UPR-SEC-33

PRINCETON SECTIONAL 3 X 3

85.3W x 85.3D x 35.5H



UPR-SEC-34

PRINCETON SECTIONAL 3 X 4

85.3W x 110D x 35.5H



UPR-SEC-44

PRINCETON SECTIONAL 4 X 4

110W x 110D x 35.5H

Edgewood



UEW-CHR

EDGEWOOD CHAIR

59W x 36D x 26H



UEW-LUV

EDGEWOOD LOVESEAT

59W x 36D x 26H



UEW-OTT

EDGEWOOD OTTOMAN

23W x 30D x 19H



UEW-SOF

EDGEWOOD SOFA

82W x 36D x 26H



UEW-SEC-33

EDGEWOOD SECTIONAL 3 X 3

93.87W x 93.87D x 26H



UEW-SEC-34

EDGEWOOD SECTIONAL 3 X 4

118.67W x 93.87D x 26H

FINISH OPTIONS

Laminate, Fabrics & Metal

LAMINATE

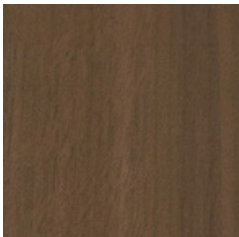
PASADENA OAK



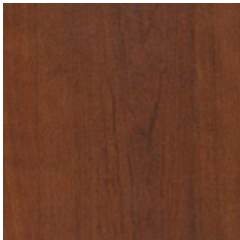
LOFT OAK



PINNACLE WALNUT



BROWN CHERRY



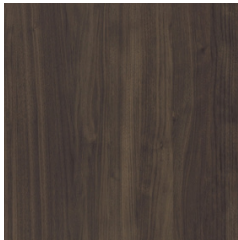
WEST ELM



GREY ELM



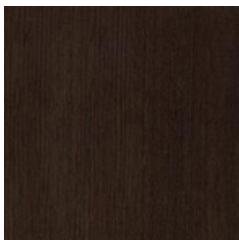
FLORENCE WALNUT



SKYLINE WALNUT



ESPRESSO



METAL

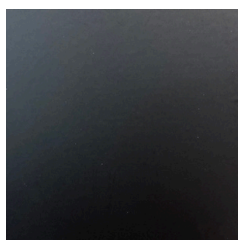
PEWTER



GRAPHITE

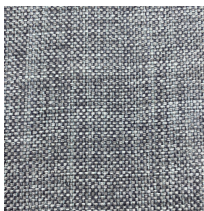


MATTE BLACK



DURABLE WOVEN

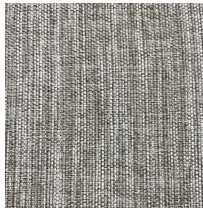
CADET GREY



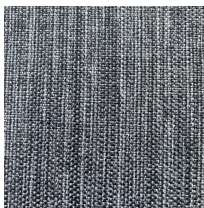
BLACK



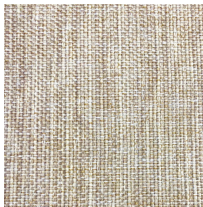
LITE GREY



SLATE



SAND



OCEAN



VINYL

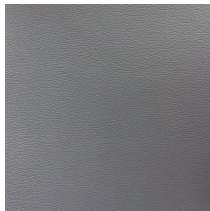
AUGUSTA GREY



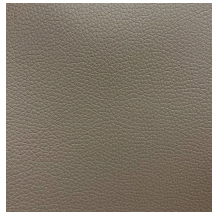
GRAPHITE



GREYSTONE



GUNMETAL



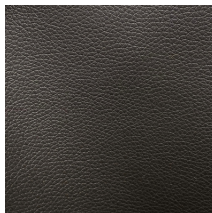
APACHE CHOCOLATE



CHESTNUT



BLACK



PECAN



Hardware & Pulls



ROUTED FINGER



SMP-5



SMP-3



SMP-7



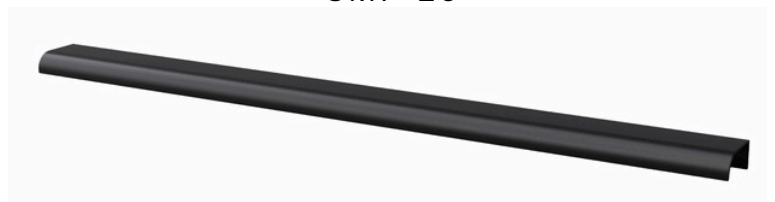
SMP-15



SMP-1



SMP-16



Accessories and Upgrades



FR-HT1-411224

FRANKLIN HUTCH

41W x 12D x 24H



FR-HT2-411236

FRANKLIN HUTCH 2-SHELF

41W x 12D x 36H



AX-HT-340707

DESK HUTCH

34W x 7D x 7H



CBY-001

HOOK ON CUBBY

27W x 6D x 6H



SRL-

SAFETY RAIL

SRL-B01
65W x 1D x 17.95H

SRL-B02
55.75W x 1D x 17.95H



LDR-001

METAL LADDER

14W x 3.25D x 72H

Upgrades:

LIGHT

PIANO HINGE

CORKBOARD

LATCH

OUTLET

HASP LOCK

MIRROR

CASTERS

Muma by Smarter Furnishings

Crafted for comfort and built to last, our upholstery collection blends refined textures with clean lines and thoughtful details. From plush sofas to tailored accent chairs, each piece is designed to bring warmth, style, and effortless sophistication to your space.

Lounge Tables



CLOUD TABLE SQUARE

27.6W x 27.6D x 12.6H



CLOUD CONNECTOR TABLE 30°

27.5W x 27.5D x 1H



DOPPIO D380

19.6W x 19.6D x 16.4H



DOPPIO D500

19.6W x 19.6D x 16.4H



WAGON AUX TABLE

15.8W x 15.8D x 22.9H



DOPPIO D1200

47.2W x 47.2D x 17.1H



JUNO TABLE SET OVAL

Low: 20.6W x 20.2D x 13.8H
Medium: 38.2W x 24.5D x 15.8H
High: 24.5W x 23.9D x 17.7H



Doppio, auxiliary table (white) and wagon

Upholstery



**JUNO SOFA WITH SHORT
BACKREST - RIGHT -LEFT
ORIENTED 1200**

47.2W x 26.8D x 30.7H



**JUNO SOFA WITHOUT
BACKREST 1200**

47.2W x 24D x 18.9H



**JUNO SOFA WITH HIGH
BACKREST 1200**

47.2W x 26.8D x 30.7H



**JUNO SOFA WITH SHORT
BACKREST - RIGHT -LEFT
ORIENTED 1800**

70.9W x 26.8D x 30.7H



**JUNO SOFA WITHOUT
BACKREST 1800**

70.9W x 24D x 18.9H



**JUNO SOFA WITH HIGH
BACKREST 1800**

70.9W x 26.8D x 30.7H



**JUNO CURVED SOFA
WITH HIGH BACKREST**

41.7W x 28.7D x 30.7H



**JUNO CURVED SOFA
WITH SHORT BACKREST**

39.4W x 28.7D x 30.7H



**CLOUD LOVESEAT WITH
ARM REST**

61.8W x 29.9D x 35.5H



**CLOUD 3 SEAT SOFA
WITH ARM REST**

86.6W x 29.9D x 35.5H



BANKO - 1220

48W x 25.2D x 37.9H



BANKO - 920

36.2W x 25.2D x 37.9H

Lounge Chairs



AURO
20.7W x 22.4D x 30.7H



BOW WITH SLED BASE
29.7W x 28.7D x 29.9H



QUEEN WITH WOOD BASE
30.7W x 29.9D x 44.5H



QUEEN WITH WOOD BASE
30.7W x 30D x 44.5H



ONDA WITH WOOD BASE
25.2W x 25.2D x 31.9H



ONDA WITH WOOD BASE
25.2W x 25.2D x 31.9H



ARIA WITHOUT HEADREST
31.7W x 31D x 37.2H



ARIA WITH HEADREST
31.7W x 33.2D x 45.3H



VELA WITH WOOD BASE
25.5W x 24.6D x 28.4H



VELA WITH SLED BASE
25.5W x 24.6D x 28.4H



Queen Armchair



Square lizard table (white) and chair icons.

Seating



BOW WITH CASTERS

25W x 25D x 32-35H



BOW NO ARMS WITH 4 LEGS

22.8W x 20.9D x 33.8H



BOW NO ARMS WITH CASTERS

22.8W x 21D x 18-20H



DRESS CHAIR SLED BASE

21W x 20.4D x 33.2H



BEND CHAIR

20.1W x 19.4D x 30.7H



BEND COUNTER STOOL

20.1W x 19.4D x 40.3H



**INTERIOR UPHOLSTERY
ICONS STOOL
WOODEN BASE**

20.8W x 20.5D x 43.3H



**INTERIOR UPHOLSTERY
ICONS CHAIR
WOODEN BASE**

20.8W x 20.5D x 31.5H



**INTERIOR UPHOLSTERY
ICONS CHAIR
SPIDER BASE**

20.8W x 20.5D x 31.5H



**INTERIOR UPHOLSTERY
ICONS CHAIR**

20.8W x 20.5D x 31.5H



JUGA

25W x 26D x 32H



JUGA UPHOLSTERED

25W x 26D x 32H



Mobel Conference Chair & Soho Table

Office & Educational



INGO CHAIR CAT A WITH SLIDER

28.3W x 28.3D x 41.1H (Max)



MEDIUM SURF BAR TABLE 1.80X0.60M H 1.00M

70.8W x 23.6D x 39.5H



MEDIUM SURF BAR COUNTER HEIGHT TABLE 2.40X1.10M H 1.00M

94.5W x 43.3D x 39.5H



LIZARD ROUND TABLE - 900

35.4W x 35.4D x 28.7H



LIZARD ROUND TABLE - 1200

47.2W x 47.2D x 28.7H



LIZARD SQUARE TABLE 80X80

31.5W x 31.5D x 28.7H



CBP TABLE 800

31.5W x 31.5D x 28.3H



MOBILE BOARD

47.2W x 19.1D x 74.8H



MOBILE CONFERENCE CHAIR

27.2W x 27.6D x 33.9H



NOOK CHAIR

35.9W x 33.5D x 36.6H



NOOK CHAIR TALL

35.9W x 33.5D x 49.6H

OUTDOOR FURNITURE



WOODY CHAIR

22.2W x 23.2D x 26.5H



ONA CHAIR

20.5W x 22.4D x 31.1H



LOUISE CHAIR

20.9W x 17.3D x 31.5H



FIX TABLE

23.6W x 23.5D x 29.9H

29.9W x 29.9D x 29.9H

31.5W x 31.5D x 29.9H

Warranty

CASEGOODS WARRANTY

Smarter Furnishings warrants its product to be free of defects in materials and workmanship under normal use and service for a period of 25 years (3 shift) from the date of invoice for all casegood products. During this time period, Smarter Furnishings will repair or replace free of charge any product that proves to be defective.

The products are sold only with such warranty as is expressly provided for in the preceding paragraph no other warranties, express or implied. Smarter Furnishings expressly excludes any warranty of merchantability or fitness for a particular purpose. Smarter Furnishings shall not be responsible for incidental or consequential damages for any breach of warranty with respect to products sold hereunder.

MATTRESS WARRANTY

Smarter Furnishings warrants its product to be free of defects in materials and workmanship under normal use and service for a period of 5 years from the date of invoice for all mattresses. During this time period, Smarter Furnishings will repair or replace free of charge any product that proves to be defective. The products are sold only with such warranty as is expressly provided for in the preceding paragraph no other warranties, express or implied. Smarter Furnishings expressly excludes any warranty of merchantability or fitness for a particular purpose. Smarter Furnishings shall not be responsible for incidental or consequential damages for any breach of warranty with respect to products sold hereunder.

UPHOLSTERY WARRANTY

Smarter Furnishings warrants its upholstery to be free of defects in materials and workmanship under normal use and service for the following -12 years for the frame, 5 years for the foam, and 1 year for Smarter Furnishings standard fabrics. All other fabrics will carry the manufacturer's warranty. During these time periods, Smarter Furnishings will repair or replace free of charge any product that proves to be defective.

The products are sold only with such warranty as is expressly provided for in the preceding paragraph no other warranties, express or implied. Smarter Furnishings expressly excludes any warranty of merchantability or fitness for a particular purpose. Smarter Furnishings shall not be responsible for incidental or consequential damages for any breach of warranty with respect to products sold hereunder.

Warranty Disclaimers:

Smarter Furnishing warranties do not apply to any item which is damaged due to misuse, neglect, alteration, abuse, or accident.


Case Studies

Take a deeper look at some of the projects we have completed!





Contact Us

 205.621.2502

 Sales@SmarterFurnishings.com

 www.SmarterFurnishings.com



smarter
FURNISHINGS