



★ Mixed Materials ★



≡ Built to Last ≡



🦉 Rest Easy !!



🌸 Off Campus Comfort



Res Life to Love ✨



{ Custom Designs



Life-Long Partnerships
~~~~~



## Quality built from the inside out... it's at the heart of what we do.

Hand picked installation teams deliver unsurpassed service, to make everyday essentials feel extraordinary.

Experience . . . our hands-on team members bring a wealth of knowledge and understanding to every Smarter Furnishings partnership.

- Installation deadline priority
- Project qualified custom designs
- Cost reduction strategies
- Engineered to last 25 years

## Book a Consultation

<https://smarterfurnishings.com/book-virtual-demo/>







**4-Drawer Chest**  
FR-CH4-341836  
34W x 18D x 36H



**3-Drawer Chest**  
FR-CH3-302430  
30W x 24D x 30H



**5-Drawer Chest**  
FR-CH5-242445  
24W x 24D x 45H



**2-Drawer Chest**  
FR-CH2S-301818  
30W x 18D x 18H  
FR-CH2S-302418  
30W x 24D x 18H



**3-Drawer Pedestal**  
FR-MP3-162430  
16W x 24D x 30H



**2-Drawer Pedestal**  
FR-MP2-162222  
16W x 22D x 22H  
FR-MP2-162430  
16W x 24D x 30H



**Hutch for Desk**  
FR-HT1-411224  
41 x 22D x 24H  
Pictured with desk



**2-Shelf Hutch**  
FR-HT2-411236  
41W x 12D x 36H  
Pictured with desk



**Mobile Pedestal**  
FR-MP1S1-162430  
16W x 24D x 30H  
FR-MP1S1-162222  
16W x 22D x 22H



**Nightstand**  
FR-NS1-181826  
18W x 18D x 26H



**Desk with Drawer**  
FR-WD1-422430  
42W x 24D x 30H  
FR-WD1-362430  
36W x 24D x 30H



**Writing Desk**  
FR-WD-302430  
30W x 24D x 30H  
FR-WD-362430  
36W x 24D x 30H  
FR-WD-422430  
42W x 24D x 30H



**Pedestal Desk**  
FR-PD2S2-422430  
42W x 24D x 30H



**Pedestal Desk**  
FR-PD4-422430  
42W x 24D x 30H

## FRANKLIN COLLECTION

The Franklin Collection offers a traditional design with clean lines.

High pressure laminate panels with PVC edge banding and **solid internal construction**. Optional finger or applied pulls are available for drawer fronts.

Drawer boxes are reinforced and have a custom **SMARTER** drawer glide with a 125 lb. load bearing capacity.

*\*Indicates additional dimensions are available*



“The Franklin collection continues to be a favorite on college campuses throughout North America.”

**Brian Tipton**  
President,  
Smarter Furnishings



**Bookcase**  
FR-BK2-241530  
24W x 15D x 30H



**4-Shelf Bookcase**  
FR-BK4-241548  
24W x 15D x 48H



**3-Shelf Bookcase**  
FR-BK3-241536  
24W x 15D x 36H



**5-Shelf Bookcase**  
FR-BK5-241560  
24W x 15D x 60H



**Wardrobe**  
FR-WR3-362472  
36W x 24D x 72H



**1-Drawer Wardrobe**  
FR-WR1-362472  
36W x 24D x 72H



**2-Drawer Wardrobe**  
FR-WR2-362472  
36W x 24D x 72H



**3-Drawer Wardrobe**  
FR-WR3-362472  
36W x 24D x 72H



## FRANKLIN STORAGE

The Franklin storage products offer traditional design with clean lines that coordinate with products from the Apex and Acacia lines.

### Recent Project: On Campus Renovated Residence Hall

Featuring custom designed pantry, wardrobe, under bed 2-Drawer chests, and complimentary custom laminate Apex writing desk







**4-Drawer Chest**  
AX-CH4-341836  
34 X 18D X 36H



**3-Drawer Chest**  
AX-CH3-302430  
30 X 24D X 30H  
AX-CH3-362430  
36 X 24D X 30H



**6-Drawer Chest**  
AX-CH6-541836  
54 X 18D X 36H



**Pedestal Desk**  
AX-PD2S2-422430  
42 X 24D X 30H



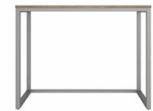
**1-Drawer Desk**  
AX-WD1F-362430  
36 X 24D X 30H  
AX-WD1F-402030  
40 X 20D X 30H  
AX-WD1F-422430  
42 X 24D X 30H



**Nightstand**  
AX-NS1-181822-01  
18X 18D X 22H



**2-Drawer Chest**  
COR-CH2-302418  
30 X 24D X 18H  
COR-CH2-301818  
30 X 18D X 18H



**Writing Desk**  
AX-WD-402030  
40 X 20D X 30H  
AX-WDF-402030  
40 X 20D X 30H



**End Table**  
AX-ET-202020  
20X 20D X 20H



**Media Unit**  
AX-MU-401824  
40X 18D X 24H



**C Tray Table**  
AX-CTT-181825  
18 X 18D X 25H



**Dining Table**  
AX-DT-303030  
30X 30D X 30H  
AX-DT-363630  
36X 36D X 30H



**Round Table**  
AX-DTR-3630-X  
36X 36D X 30H



**Coffee Table**  
AX-CT-402018  
40 X 20D X 18H

## APEX COLLECTION

Apex features high pressure laminate panels with PVC edge banding and **solid internal construction**.

The drawer boxes are reinforced and have a custom *SMARTER* drawer glide with a 125 lb. load bearing capacity.

The metal bases are **fully welded**, mitered joints and are constructed with 16-gauge steel. Some products are available in KD format.



## ACACIA COLLECTION

Nesting bedroom components of the **Acacia Collection** free up valuable space in tight student environments.

“The outlet on the underbed bookcase is one of the most popular features for our students.”

Jane Brakefield  
Senior Designer  
Capstone Properties



**Acacia Bookcase**  
AC-BK2-182018  
18X 20D X 18H



**2-Drawer Chest**  
AC-CH2-262018  
26X 20D X 18H



**Coffee Table**  
AC-CTR-3018  
30X 30D X 18H



**Writing Desk**  
AC-WD1-342230  
34X 22D X 30H



**Dining Table**  
AC-DT-363630  
36X 36D X 30H



**Media Unit**  
AC-MU-421824  
42X 18D X 24H





**4-Drawer Chest**  
SX-CH4-341836  
34W x 18D x 36H



**2-Drawer Table**  
SX-NS2-181826  
18W x 18D x 26H



**Saxman Dining**  
SX-DT-363630  
36W x 36D x 30H  
SX-DT-423530  
42W x 23D x 30H



**1-Drawer Table**  
SX-NS1-181826  
18W x 18D x 26H



**6-Drawer Chest**  
SX-CH6-542030  
54W x 20D x 30H



**1-Drawer Desk**  
SX-WD1-402030  
40 x 20D x 30H



**End Table**  
SX-ETR-2020-01  
20W x 20D x 20H



**Writing Desk**  
SX-WD-402030  
40W x 20D x 30H



**Coffee Table**  
SX-CTR-3018-01  
30W x 30D x 18H



**Hutch Desk**  
SX-WDH3-402035  
40W x 20D x 35H



**Media Unit**  
SX-MU-481830  
48W x 18D x 30H



**3-Drawer Chest**  
SX-CH3-302030  
30W x 20D x 30H



Mid-Century Modern



## SAXMAN COLLECTION

With a mid-century design, the Saxman collection provides a residential look for students.

It features a versatile pieces and offers metal or wooden legs to create the perfect welcoming environment.



Comfort and durability are the winning combination necessary for any of our common area pieces.



**Loveseat**

UEW-LUV  
60W x 36D x 26H



**Edgewood Sofa**

UEW-SOF  
82W x 36D x 26H



**Edgewood Chair**

UEW-CHR  
37W x 33D x 26H



**Sectional 3 x 3**

UEW-SEC-33  
93.87W x 93.87D x 26H  
UEW-SEC-34  
118.67W x 93.87D x 26H



**Grayson Chair**

UGR-CHR  
27.36W x 24.16D x 29.92H

Attract students  
with your furnishings

**Vinyl Options**

Black and Pecan





## BAYSHORE COLLECTION

Comfort and durability are the winning combination necessary for any of our common area pieces. With fixed cushions and metal legs, the Bayshore line offers a modern look for students.



**Bayshore Sofa**  
UBS-SOF  
86W x 38.25D x 31.25H



**Metal Legs**  
6.89H



**Lounge Chair**  
UBS-CHR  
39.17W x 38.25D x 31.25H

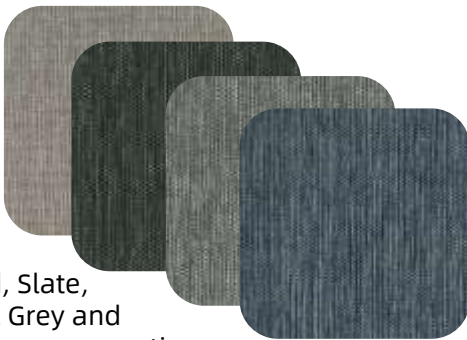


**Loveseat**  
UBS-LUV  
62.6W x 38.25D x 31.25H



**Sectional 3 x 3**  
UBS-SEC-33  
93W x 93D x 31.25H

### Fabric Options



Sand, Slate,  
Light Grey and  
Ocean woven options

### Leg Options



Matte Black and Pewter





SMARTER FURNISHINGS™

## LEXINGTON COLLECTION

Upholstery series available in Lounge Chair, Loveseat and various Sectionals.



**Lounge Chair**

ULXT-CHR

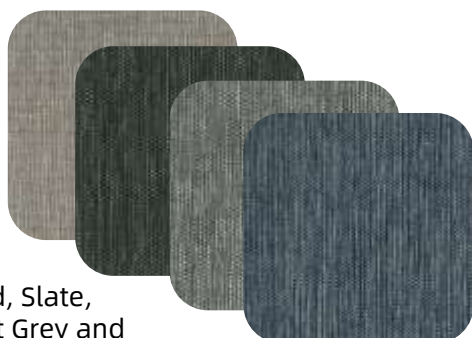
34.25W x 33.27D x 35H



**Lexington Loveseat**

ULXT-LUV

34.25W x 33.27D x 35H



Sand, Slate,  
Light Grey and  
Ocean woven options



**Lexington Sofa**

ULXT-SOF

34.25W x 33.27D x 35H





### Sectional 3 x 3

UPR-SEC-33

85.3W x 85.3D x 35.4H

## PRINCETON COLLECTION

Designed with comfort in mind, soft interior arms make the perfect resting spot to revive.

### Loveseat

UPR-LUV

57.5W x 35D x 35.4H



### Princeton Sofa

UPR-SOF

80W x 35D x 35.4H



### Lounge Chair

UPR-CHR

35.4W x 35D x 35.4H

## Vinyl Fabric Options



### Grayson Chair

UGR-CHR

27.36W x 24.61D x 30H



Apache  
Chocolate



Graphite



Greystone



Gunmetal



Black



### VINYL FABRICS

PVC fabrics are designed to withstand the demands of student life.



## KEYSTONE COLLECTION

This hardworking upholstery series is available in Lounge Chair, Loveseat, Sofa and various Sectionals.

Removable and replaceable components extend life and support sustainability goals.



3 x 3 Sectional

UKS-SEC-33

87W X 87D X 34H

### PVC VINYL Options



Apache Chocolate  
Chestnut



Greystone  
Black



Gunmetal  
Graphite



Loveseat

UKS-LUV

58W X 35D X 34H



Keystone Sofa

UKS-SOF

81W X 35D X 34H



Lounge Chair

UKS-CHR

35W X 35D X 34H





## Wood Finish and Laminate Options



**Pinnacle  
Walnut**



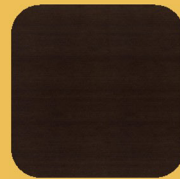
**Grey  
Elm**



**Kensington  
Maple**



**Skyline  
Walnut**



**Espresso**



**West  
Elm**



**Adjustable Height Bed**  
BX-BED2-T (TXL) Wood  
AX-BED2-T (TXL) Metal  
38.5W X 80 (85.75)D X 36H  
Bunkable and Loftable



**Loft Kit**  
BX-LKIT-T (TXL) Wood  
AX-LKIT-T (TXL) Metal  
38.5W X 80 (85.75)D X 60H  
Loft Beds and Loft Kits  
available with Safety Rail



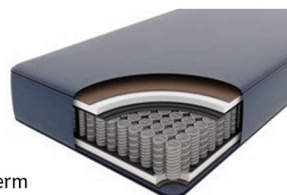
**Bunk Beds**  
Quantity Two Metal or Wood  
Adjustable Height Beds



**60" Loft Bed**  
BX-LOFT-T (TXL) Wood  
AX-LOFT-T (TXL) Metal  
38.5W X 80 (85.75)D X 60H  
available with Safety Rail and  
stabilizer bar



**Apex Twin Bed**  
AX-BED-TH-22  
39W X 77D X 58H  
Free Standing Beds and Laminate Headboards  
available in TXL, Full, Full XL and Queen



**Twin Mattress germ  
and moisture resistant**  
MTS-NJ-T 39W 75D 7.5H  
Available in Twin, Twin XL,  
Full, Full XL and Queen

## Metal Finishes



**Matte Black, Pewter,  
and Graphite**



**Bunsen Stack Chair**  
DC-013 Seat 18H  
20.5W X 18D X 32.5H



**Leaf Desk Chair**  
LEAF-01 Seat 18H  
22.5W X 20.5D X 33H



**Leaf Sled Base**  
LEAF-02 Seat 18H  
22.5W X 20.5D X 33H



**Task Chair**  
AHC-50371PXL-TSK  
21W X 20D X 31H



**Derby Chair**  
DC-038S Seat 18H  
18.5W X 22D X 31H



**Metal with Wood Seat**  
DC-004 Seat 18H  
18W X 20D X 32H



**Metal Back Chair**  
DC-010 Seat 18H  
19.25W X 22D X 32.25H



**2-Position Chair**  
TPC-WBUS  
19W X 23D X 19H



**Bent Plywood**  
DC-012 Seat 18H  
21W X 20D X 31H



**2-Position Metal**  
MTPC Seat 18H  
19W X 23D X 31H



**Metal Stool**  
Available counter  
or bar height



**Wood Chair**  
DC-001 Seat 18H  
17.5W X 20.5D X 36H



**Metal Back Stool**  
Available counter  
or bar height



**Bent Plywood Stool**  
Available counter  
or bar height



**Derby Stool**  
Available counter  
or bar height



**Wood Seat Stool**  
Available counter  
or bar height

## FLEXIBLE DINING

The mobile counter height dining allows for flexible living based on student needs.

### Recent Project:

#### The Marshall Birmingham, AL

Featuring custom dining components and modern upholstery pieces.



Quick Ship Chairs ✨



## REFERENCES

Marc Booker

*Executive Director Housing*  
University of Alabama,  
Birmingham  
205.996.0400

Herbert Reeves

*Dean of Students*  
Troy University  
334.670.3451

Jason Boler

*Inventory and Property*  
*Control Manager*  
Mississippi St University  
662.325.3555

David Wilson

*Director of Housing*  
Murray State University  
270.809.2310

Casey Ingram

*Director of Residential Life*  
Louisiana Tech University  
318.257.4917

Karalee Rogoski

*Account Manger*  
University of Alberta  
780.780.5724

Mathew McGrath

*Office of Housing and*  
*Residential Life*  
University of MA, Boston  
matthew.mcgrath@umb.edu

Shelly Orr

*Lead Designer*  
*Independent Consultant*  
256.338.5255

Jane Brakefield

*Director of SE Design*  
Capstone Interiors  
205.949.5061

Margaret Hanson

*Operations Project Lead*  
The Scion Group LLC  
312.704.5100

Jessica Kane

*Project Manager*  
The Michaels Organization  
University of California at Davis  
405.388.6378

Ashley Hadfield

*Project Manager*  
Ivory University  
ashley@2hconstructionco.com

“Collectively, they are the most reliable, professional, ethical, helpful, and responsive company with which I have ever worked. Ever.”



Mark Booker,  
University of Alabama,  
Birmingham



## WOODLAWN COMMONS *University of Chicago*

### project

The P3 development with the University of Chicago and Capstone On-Campus Management included 1200+ bedroom sets with many custom crafted products including innovative wardrobe and shelving storage solutions.

### composition

To deliver and install a full month ahead of schedule amidst ongoing construction demands.

### partnership

Smarter Furnishings has been proud to partner with Capstone On-Campus Management for over 25 years.

### consultation

Book a Virtual Consultation  
[sales@smarterfurnishings.com](mailto:sales@smarterfurnishings.com) | (205) 621-2502  
[smarterfurnishings.com](http://smarterfurnishings.com)

©Smarter Furnishings -is a trade name of Appalachian University Systems.

*2021 Innovator Award  
for Best Public Private  
Partnership Development*

*-Student Housing  
Magazine*







The Marshall



✦ Built for Students ✦

## ⇒ project

New Jersey based Aptitude was looking for a partner to deliver the wow factor in furnishings that they have become known for when developing the new Marshall project located on the edge of the growing University of Alabama at Birmingham campus.

## ⇒ challenge

To deliver and install a full month ahead of schedule amidst ongoing construction demands.

*"When asked to deliver a full month ahead of our contracted installation date, due to the need for housing for the World Games, we asked ourselves, 'How can we make this happen?' and we did! I'm so proud of our installation crew; they managed to deliver the same **outstanding customer service** we are known for in the industry."*

## ⇒ consultation

Book a Virtual Consultation  
sales@smarterfurnishings.com | (205) 621-2502  
smarterfurnishings.com







## ORCHARD PARK *University of California, Davis*

### project

The Green at University of California, Davis is slated to be the largest student housing project in North America to date. It is a P3 development with the university and The Michaels Organization (TMO).

The total Scope is 3,290 bedrooms in 1247 units. With 12 suppliers being considered, Smarter Furnishings was awarded the project in 2019.

### challenge

To create innovative spaces that allow students to thrive with custom furnishings and amenities to suit their ever-evolving needs.

### consultation

Book a Virtual Consultation  
[sales@smarterfurnishings.com](mailto:sales@smarterfurnishings.com) | (205) 621-2502  
[smarterfurnishings.com](https://smarterfurnishings.com)

©Smarter Furnishings - is a trade name of Appalachian University Systems.

*"North America's largest student housing project and by far the best vendor we worked with for this multi-phase development!"*

-Project Lead,  
The Michaels Organization







Industry  
standard

Our case goods  
are engineered  
to last 25 years.

1y 5ys 10ys 15ys 20ys 25ys  
NUMBER OF YEARS TO REPLACEMENT

Engineered to last 25 years... well beyond the industry  
standard of five to seven years. We guarantee it!

# WARRANTIES

## **SMARTER FURNISHINGS GENERAL LIMITED CASE GOODS WARRANTY**

Smarter Furnishings warrants its product to be free of defects in materials and workmanship under normal use and service for a period of 25 years (3 shift) from the date of invoice for all case good products: beds, tables, chests, nightstands, media units and desks. During this time period, Smarter Furnishings will repair or replace free of charge any product that proves to be defective.

The products are sold only with such warranty as is expressly provided for in the preceding paragraph no other warranties, express or implied. Smarter Furnishings expressly excludes any warranty of merchantability or fitness for a particular purpose. Smarter Furnishings shall not be responsible for incidental or consequential damages for any breach of warranty with respect to products sold hereunder.

## **MATTRESS WARRANTY**

Smarter Furnishings warrants its product to be free of defects in materials and workmanship under normal use and service for a period of 3 years from the date of invoice for all mattresses. During this time period, Smarter Furnishings will repair or replace free of charge any product that proves to be defective. The products are sold only with such warranty as is expressly provided for in the preceding paragraph no other warranties, express or implied. Smarter Furnishings expressly excludes any warranty of merchantability or fitness for a particular purpose. Smarter Furnishings shall not be responsible for incidental or consequential damages for any breach of warranty with respect to products sold hereunder.

## **UPHOLSTERY WARRANTY**

Smarter Furnishings warrants its upholstery to be free of defects in materials and workmanship under normal use and service for the following - 12 years for the frame, 5 years for the foam, and 1 year for Smarter Furnishings standard fabrics. All other fabrics will carry the manufacture's warranty. During these time periods, Smarter Furnishings will repair or replace free of charge any product that proves to be defective.

The products are sold only with such warranty as is expressly provided for in the preceding paragraph no other warranties, express or implied. Smarter Furnishings expressly excludes any warranty of merchantability or fitness for a particular purpose. Smarter Furnishings shall not be responsible for incidental or consequential damages for any breach of warranty with respect to products sold hereunder.

### **Warranty Disclaimers:**

Smarter Furnishing warranties do not apply to any item which is damaged due to misuse, neglect, alteration, abuse, or accident.

