



For over three decades, Smarter Furnishings has been a trusted partner and provider for universities, hotels, healthcare facilities, and other institutions across North America allowing our customers to rest easy.

MillerKnoll Alliance  
Partner since 2019

### Contact Us

**Jennifer Moore**

Sales Support

[jennifer@smarterfurnishings.com](mailto:jennifer@smarterfurnishings.com)

Office 205.621.2502





**SMARTER FURNISHINGS**  
Rest easy!™



**Nightstand/Side Table**  
SX-NS1-181826  
18W x 18D x 26H



**Chest 4-Drawer**  
SX-CH4-341836  
34W x 18D x 36H



**Round Coffee Table**  
SX-CTR-3018-01  
30W x 30D x 18H



**Media Unit**  
SX-MU-481830  
48W x 18D x 30H

## SAXMAN COLLECTION

With a mid-century design, the Saxman collection brings home that residential feeling.

It features a versatile side table for living room or bedroom, various dresser and desk options as well as metal or wooden legs to create the perfect welcoming environment.



**Desk with 1-Drawer**  
SX-WD1-402030  
40W x 20D x 30H



**Desk with Hutch**  
SX-WDH3-402035  
40W x 20D x 35H



## ACACIA COLLECTION

Nesting bedroom components of the Acacia Collection free up valuable space.



SMARTER  
FURNISHINGS  
*Rest easy!*

“The outlet on the underbed bookcase is one of the most popular features for our students.”

Jane Brakefield  
Senior Designer  
Capstone Properties



**2-Drawer Chest**  
AX-CH2-262018  
26W x 20D x 18H



**Acacia Bookcase**  
AC-BK2-182018  
18W x 20D x 18H



**Acacia Coffee Table**  
AC-CTR-3018  
30W x 30D x 18H



**One-Drawer Desk**  
AC-WD1-342230  
34W x 22D x 30H



**Media Unit**  
AC-MU-421824  
42W x 18D x 24H



**Dining Table**  
AC-DT-363630  
36W x 36D x 36H

## COMING SOON

The Viva Collection featuring the metal and laminate **Blis** desk series





**Four-Drawer Chest**  
AX-CH4-341836  
34W x 18D x 36H



**Nightstand**  
AX-NS1-181826-01  
18W x 18D x 26H



**Two-Drawer Chest**  
COR-CH2-301818  
30W X 18D X 18H



**Coffee Table**  
AX-CT-402018  
40W x 20D x 18H



**Media Unit**  
AX-MU-401824  
40W x 18D x 24H



**One-Drawer Desk**  
AX-WD1F-362430  
36W X 24D X 30H

## APEX COLLECTION

Open areas below solid surfaces create a spacious feel for tight student environments. Metal bases are **fully welded** with miter joints and are constructed with 16-gauge steel.







## KEYSTONE COLLECTION

Features traditional design available in Lounge Chair, Loveseat and various Sectionals.



## EDGEWOOD COLLECTION

Modern bistro design available in Loveseat, Sofa and various Sectionals.



## PRINCETON AND PARK COLLECTIONS

Upholstery series available in Lounge Chair, Loveseat and various Sectionals.







### Loft Beds

BX-LFT60-TXL Wood  
AX-LFT60-TXL Metal  
38.5W X 85.75D X 60H  
Loft Beds and Loft Kits  
available with Safety Rail



### Bunk Beds

AX-BED1-TXL Metal  
BX-BED1-TXL Wood  
38.5W X 85.75D X 72H  
Quantity Two



### Wood Adjustable Height Bed

BX-BED1-TXL  
38.5W X 85.75D X 36H  
Bunkable and Loftable



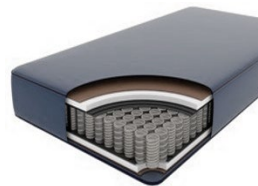
### Metal Adjustable Height Bed

AX-BED1-TXL  
38.5W X 85.75D X 36H  
Bunkable and Loftable



### Twin Mattress moisture and germ resistant

MTS-NJ-TXL  
39W 80D 7.5H  
Available in Twin, Twin XL, Full, Full XL and Queen



### Apex Beds

AX-BED-TXLH-22  
39W X 82D X 58H  
Free Standing Beds and Laminate Headboards available in TXL, Full, FXL and Queen



### Free Standing Beds

FS-F-547522-01  
54W X 75D X 22H  
Available in TXL, Full, FXL and Queen





**Bunsen Stack Chair**  
DC-013 Seat 18H  
20.5W X 18D X 32.5H

**Leaf Sled Base**  
LEAF-02 Seat 18H  
22.5W X 20.5D X 33H

**Leaf Chair**  
LEAF-01 Seat 18H  
22.5W X 20.5D X 33H



**Derby Chair**  
DC-038 Seat 18H  
TBD

**Bent Plywood Chair**  
DC-012 Seat 18H  
21W X 20D X 31H

**Metal Back Chair**  
DC-010 Seat 18H  
19.25W X 22D X 32.25H



**Leaf Stool**  
Available counter  
or bar height

**Bent Plywood Stool**  
Available counter  
or bar height

**Metal Back Stool**  
Available counter  
or bar height



**Metal Stool**  
CH-31320-24-BK-GG  
available bar height

**Alan Chair**  
DS-512B-BK-BK-GG  
18W x 21.5D x 31.5H

**Kalista Chair**  
BL-X-5M-LEA-GG  
24.5W x 25.5D x 37.5H



## CUSTOM DESIGN

On Campus, New Build  
Residence Hall



*“Smarter Furnishings has the ability to create custom furniture styles and sizes and fabricate what the designer wants for a project. They work with our designers to create drawings of a new product, then have a mock-up built in their factory to see how the prototype will work and look.”*

**Jane Brakefield,**  
**Director of Capstone Interiors**



### Project Customizations:

Unique finishes come together with practical student living design in this newly designed residence hall. To keep the scale with the high ceilings in the rooms, beds and wardrobes were given extra height.

### Goal:

To create innovative spaces that allow students to thrive with custom furnishings and amenities to suit their ever-evolving needs.





## CUSTOM DESIGN

On Campus, Renovated  
Residence Hall



## CUSTOM PRODUCTS

Feature high pressure laminate panels with PVC edge banding and **solid construction**. The drawer boxes are hardwood plywood, fully dovetailed and have a custom SMARTER drawer slide with a 125 lb. load bearing capacity. The metal base on the desk is **fully welded** with miter joints and are constructed with 16-gauge steel.







## CUSTOM DESIGN

Off Campus  
Student Housing



### Project:

New Jersey based Aptitude was looking for a partner to deliver the **wow factor** in furnishings that they have become known for when developing the new Marshall project located on the edge of the growing University of Alabama at Birmingham campus.

### Challenge:

To deliver and install a full month ahead of schedule amidst ongoing construction demands.

*“When asked to deliver a full month ahead of our contracted installation date, due to the need for housing for the World Games, we asked ourselves, ‘How can we make this happen?’ and we did! I’m so proud of our installation crew; they managed to deliver the same outstanding customer service we are known for in the industry.”*

**Dean Harvison**  
Managing Partner,  
Smarter Furnishings

Case Study Industry, Student  
Housing Developers





## PUBLIC PRIVATE PARTNERSHIP

### On Campus

### Student Housing



“We appreciate every opportunity to show clients just how customer-centric we are... and that's exactly what we're doing by consistently providing the highest quality furniture in the business.”

Johnny Collins  
Partner/CEO,  
Smarter Furnishings

#### Project:

The Green at University of California, Davis is slated to be the largest student housing project in North America to date. It is a P3 development with the university and The Michaels Organization (TMO). The total Scope is 3,290 bedrooms in 1247 units. With 12 suppliers being considered, Smarter Furnishings was awarded the project in 2019.

#### Goal:

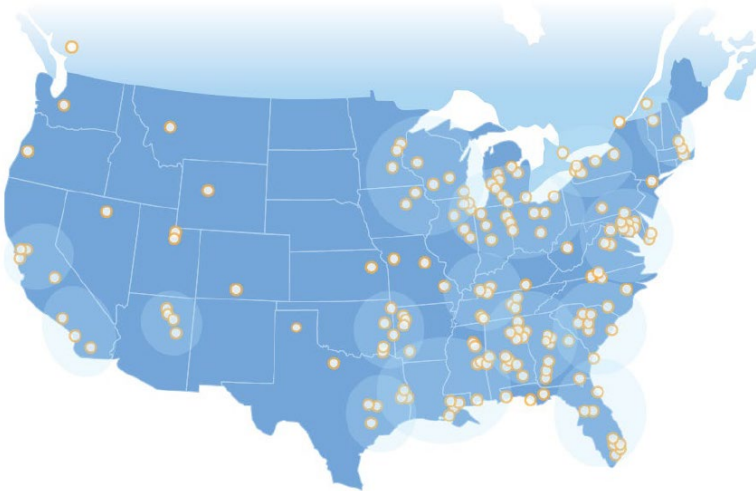
To create innovative spaces that allow students to thrive with custom furnishings and amenities to suit their ever-evolving needs.

Case Study Industry, Student  
Housing Developers P3



Smarter Furnishings has been a trusted partner and provider for universities across North America for over 30 years.

With hand picked installation teams delivering unsurpassed service, we keep our customers coming back.



- Over 750 completed installations
- Minimal assembly required
- Engineered to last 25 years

“ The senior leadership team maintains involvement in the day-to-day business – not just the sales, but the estimating, installation and follow-up. That coupled with great flexibility regarding timing of ordering, logistics of shipping, storage and installation, and more have allowed us to remain nimble as an organization. ”

Mitchell Smith,  
*Chief Operating Officer, The Scion Group*

Smarter Furnishings has been a trusted partner and provider for universities across North America for over 30 years.

At Smarter Furnishings, sustainability is a simple practice of stewardship to preserve, protect and provide for the next generation.



## Sustainable Materials

- Removable and Replaceable Fabric kits for upholstered items
- Farm to table, bed & chair: Created from farmed timber called rubberwood that is first tapped for latex production
- Harvest the future: When latex production ceases (in 25-30 years), rubberwood is harvested for furniture with 0% wasted material
- All laminate and glue is GreenGuard Certified



## Protection Standards

- Fabric flexibility: Upholstery engineered with replaceable fabric to easily and economically refresh furniture.
- Safer air quality standards: No off-gassing. No harmful VOC compounds released. CARB II and Title VI certified.
- 100% recyclable start to finish: Packaging specifically selected for AUS furniture – derived from recyclable material and then recycled on the back end after installation.



Smarter Furnishings means we engineer campus furnishings to stay in residence halls, study rooms and other common areas – and out of landfills. Features like removeable and replaceable fabric for upholstered pieces and a 25-year warranty on casegoods, help us achieve that goal.



Johnny Collins,  
*Chief Operating Officer, Smarter Furnishings*



# REFERENCES



**Marc Booker**  
*Executive Director*  
*Housing*  
University of Alabama –  
Birmingham  
205.996.0400

**Herbert Reeves**  
*Dean of Students*  
Troy University  
334.670.3451

**Jason Boler**  
*Inventory and Property*  
*Control Manager*  
Mississippi State  
University  
662.325.3555

**David Wilson**  
*Director of Housing*  
Murray State University  
270.809.2310

**Casey Ingram**  
*Director of Residential*  
*Life*  
Louisiana Tech  
University  
318.257.4917

**Lauren Taylor**  
*VP of Student Affairs*  
Samford University  
205.726.2011

**Karalee Rogoski**  
*Account Manger*  
University of Alberta  
780.780.5724

**Julie Scarbrough**  
Gilbane Building  
Company  
*Senior Transition Project*  
*Manager/*  
Purdue University  
816.500.3457

**Shelly Orr**  
*Lead Designer*  
Seattle University  
256.338.5255

**Jane Brakefield**  
*Director*  
Capstone Interiors  
205.949.5061

**Krystle Coleman**  
*Director of Operations*  
The Scion Group LLC  
312.704.5100

**Kerrie Iemma**  
*Senior Vice President*  
*Design*  
Corvias  
401.228.2800

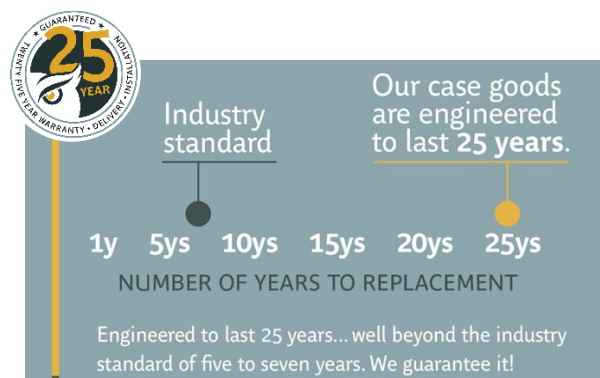
**Greg Wood**  
*President & COO*  
IMS Management  
205.523.0426

**Jessica Kane**  
*Project Manager*  
The Michaels  
Organization  
University of California  
at Davis  
405.388.6378

## CASEGOODS WARRANTY

Smarter Furnishings warrants its product to be free of defects in materials and workmanship under normal use and service for a period of 25 years (3 shift) from the date of invoice for all casegood products. During this time period, Smarter Furnishings will repair or replace free of charge any product that proves to be defective.

The products are sold only with such warranty as is expressly provided for in the preceding paragraph no other warranties, express or implied. Smarter Furnishings expressly excludes any warranty of merchantability or fitness for a particular purpose. Smarter Furnishings shall not be responsible for incidental or consequential damages for any breach of warranty with respect to products sold hereunder.



## MATTRESS WARRANTY

Smarter Furnishings warrants its product to be free of defects in materials and workmanship under normal use and service for a period of 5 years from the date of invoice for all mattresses. During this time period, Smarter Furnishings will repair or replace free of charge any product that proves to be defective. The products are sold only with such warranty as is expressly provided for in the preceding paragraph no other warranties, express or implied. Smarter Furnishings expressly excludes any warranty of merchantability or fitness for a particular purpose. Smarter Furnishings shall not be responsible for incidental or consequential damages for any breach of warranty with respect to products sold hereunder.

## UPHOLSTERY WARRANTY

Smarter Furnishings warrants its upholstery to be free of defects in materials and workmanship under normal use and service for the following - 12 years for the frame, 5 years for the foam, and 1 year for Smarter Furnishings standard fabrics. All other fabrics will carry the manufacturer's warranty. During these time periods, Smarter Furnishings will repair or replace free of charge any product that proves to be defective.

The products are sold only with such warranty as is expressly provided for in the preceding paragraph no other warranties, express or implied. Smarter Furnishings expressly excludes any warranty of merchantability or fitness for a particular purpose. Smarter Furnishings shall not be responsible for incidental or consequential damages for any breach of warranty with respect to products sold hereunder.

### Warranty Disclaimers:

Smarter Furnishing warranties do not apply to any item which is damaged due to misuse, neglect, alteration, abuse, or accident.