

# PRODUCT CATALOG

2026



# Contents

3 - ABOUT US

4 - QUICK ESSENTIALS

6 - BEDROOM

15 - LIVING ROOM

19 - DINING AND SEATING

24 - UPHOLSTERY

31 - FINISH OPTIONS

35 - ACCESSORIES AND UPGRADES

36 - WARRANTY

37 - CONTACT US





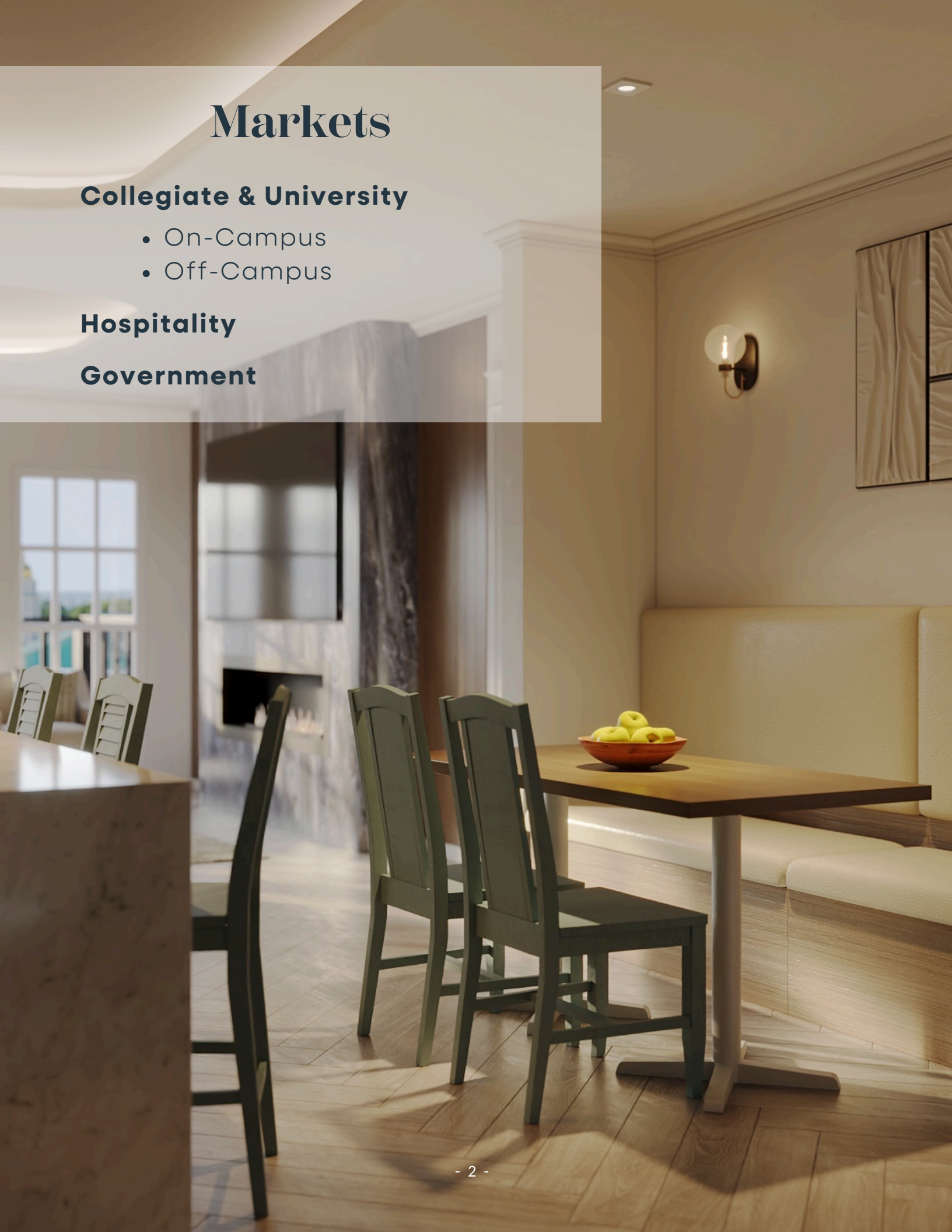
# Markets

## Collegiate & University

- On-Campus
- Off-Campus

## Hospitality

## Government





---

# About Us

## For the Moments That Matter

Every space tells a story. At Smarter Furnishings, we believe furniture is more than something you use—it's the heart of every space and the foundation for the moments that matter most. From the first dorm room that sparks independence to the common areas where friendships are forged, our furniture quietly shapes the experiences people carry with them.



## Built from the Inside Out

Our journey began with Johnny Tipton, whose vision and values continue to guide us. For over 30 years, we've partnered with student housing professionals, hospitality leaders, and property developers to create spaces that feel complete from day one.



We know what's at stake: timelines to hit, budgets to honor, and people waiting to feel at home. That's why our process balances big-picture execution with an attentive focus on every detail—agile planning, quality craftsmanship, and reliable deliveries that make things easier for you.

## Our Promise

We're here to set a new standard for partnership—one that's remembered for how it makes people feel, the connections it fosters, and the memories it creates. With best-in-class care behind every detail, we help you create smarter spaces with intention, built not just for today's moments, but for all the moments to come.



# Quick Essentials

FAST & RELIABLE

Smarter Furnishings' Quick Ship program offers stylish, durable pieces that are ready to ship. Quick Ship makes it easy to get high-quality furniture without the wait.

CHECK OUT OUR WEBSITE FOR THE COMPLETE  
LIST OF QUICK SHIP PRODUCTS:





# Quick Essentials



1



2



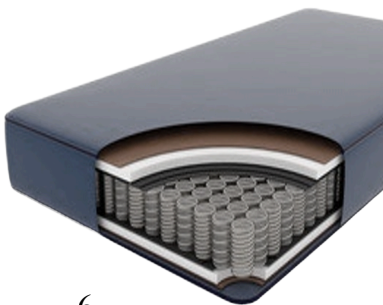
3



5



4



6



7



8

1 - Metal Dining Chair | 2 - Keystone Sofa | 3 - Freestanding Bed | 4 - Bent Plywood Chair | 5 - Apex Coffee Table | 6 - Nylon Mattress | 7 - Apex Writing Desk | 8 - Cornerstone Chest



# Bedrooms

BUILT FOR LIFE'S DAILY USE—AND  
THE MOMENTS THAT MATTER

The bedroom collection combines durability, function, and comfort to create spaces that feel like home. From fully welded, adjustable bed frames to versatile dressers, nightstands, and desks, each piece is designed for long-lasting performance in student living environments. Coordinated finishes and practical storage solutions ensure both style and efficiency in every room.



# Bookcases and Pedestals



FR-BK2

## FRANKLIN 2-SHELF BOOKCASE

24W x 15D x 30H



FR-BK3

## FRANKLIN 3-SHELF BOOKCASE

24W x 15D x 36H



FR-BK4

## FRANKLIN 4-SHELF BOOKCASE

24W x 15D x 48H



FR-BK5

## FRANKLIN 5-SHELF BOOKCASE

24W x 15D x 60H



AC-BK2

## ACACIA BOOKCASE

18W x 20D x 18H

Also available with casters!



FR-MP1-01

## POWERED MOBILE PEDESTAL WITH EXTENDABLE SHELF

18W x 20D x 22H



FR-MP1S1

## MOBILE PEDESTAL WITH SHELF

16W x 22D x 22H



FR-MP2

## MOBILE PEDESTAL WITH 2-DRAWERS

16W x 22D x 22H

16W x 24D x 30H



FR-MP3

## MOBILE PEDESTAL WITH 3-DRAWERS

18W x 24D x 30H

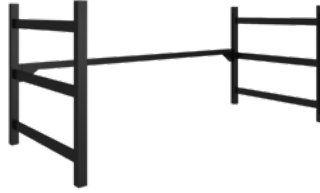


# Beds



## WOOD ADJUSTABLE HEIGHT BED

BX-BED1-TXL (Sinuous)  
38W x 85D x 36H  
BX-BED2-TXL (Tubular)  
38W x 85D x 36H



## LOFT KIT-WOOD

BX-LKIT-TXL  
38W x 85.77D x 36H



## WOOD LOFT BED

BX-LFT60-TXL  
38W x 85.77D X 60H

Safety Rail Required



## WOOD ADJUSTABLE HEIGHT BUNK BED

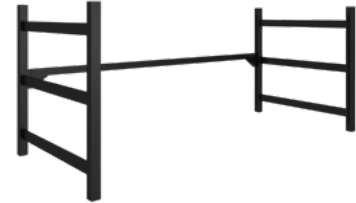
BX-BNK1-TXL72  
38W x 85.77D x 72H

Safety Rail Required



## METAL ADJUSTABLE HEIGHT BED

AX-BED1-TXL (Sinuous)  
38W x 85D x 36H  
AX-BED2-TXL (Tubular)  
38W x 85D x 36H



## LOFT KIT-METAL

AX-LKIT-TXL  
38W x 85.77D x 36H



## METAL LOFT BED

AX-LFT60-TXL  
38W x 85.77D X 60H

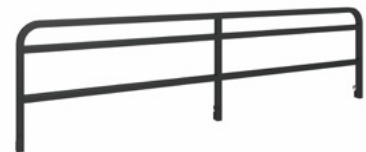
Safety Rail Required



## METAL ADJUSTABLE HEIGHT BUNK BED

AX-BNK1-TXL72  
38W x 85.77D x 72H

Safety Rail Required



## SAFETY RAIL

SRL-B01  
65W x 1D x 17.95H  
SRL-B02  
55.75W x 1D x 17.95H

# Beds



## FREESTANDING BED

FS-T-397522  
39W x 75D x 22H  
FS-F-537522  
53W x 75D x 22H  
FS-F-538022  
53W x 80D x 22H  
FS-Q-608022  
60W x 80D x 22H



## APEX HEADBOARD ON FREESTANDING BED

AX-BED-TXL-22  
39W x 80D x 22H  
AX-BED-F-22  
53W x 75D x 22H  
AX-BED-FXL-22  
53W x 80D x 22H  
AX-BED-Q-22  
60W x 80D x 22H



## TUBULAR DECK

BFA-  
Offered in Twin, Twin XL,  
Full, Full XL, & Queen



## SINUOUS SPRING

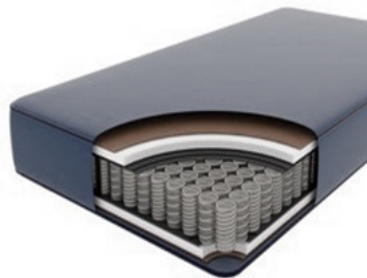
SPA-  
Offered in Twin, Twin XL,  
Full, Full XL, & Queen



LDR-004

## METAL LADDER

14W x 3.25D x 72H



MTS-N

## DOUBLE SIDED NYLON MATTRESS

Offered in Twin, Twin XL,  
Full, Full XL, & Queen





# Chests



FR-CH2S

## FRANKLIN STACKABLE CHEST

30W x 18D x 18H  
30W x 24D x 18H



FR-CH3

## FRANKLIN 3-DRAWER CHEST

30W x 24D x 30H  
36W x 24D x 30H



FR-CH4

## FRANKLIN 4-DRAWER CHEST

34W x 18D x 36H



FR-CH5

## FRANKLIN 5-DRAWER CHEST

24W x 24D x 45H



COR-CH2

## CORNERSTONE 2-DRAWER CHEST

30W x 18W x 18D  
30W x 24W x 18D



AX-CH3

## APEX 3-DRAWER CHEST

36W x 24D x 30H



AX-CH4

## APEX 4-DRAWER CHEST

34W x 18D x 36H



AX-CH6

## APEX 6-DRAWER CHEST

54W x 18D x 36H



LX-CH4

## LENOX CHEST 4-DRAWERS

34W x 18D x 36H



AC-CH2

## ACACIA 2-DRAWER CHEST

26W x 20D x 18H



SAX-CH3

## SAXMAN CHEST 3-DRAWERS

30W x 20D x 30H



SAX-CH6

## SAXMAN CHEST 6-DRAWERS

54W x 20D x 30H

# Nightstands



FR-NS1

## NIGHTSTAND WITH 1-DRAWER

18W x 18D x 26H



LX-NS1-01

## LENOX NIGHTSTAND 1-DRAWER

18W x 18D x 26H



AX-NS1-01

## APEX NIGHTSTAND WITH DRAWER

18W x 18D x 22H

18W x 18D x 26H



SAX-NS1

## SAXMAN NIGHTSTAND 1-DRAWER

18W x 18D x 26H



SAX-NS2

## SAXMAN NIGHTSTAND 2-DRAWERS

18W x 18D x 26H



DYL-NS1

## DYLAN NIGHTSTAND WITH DRAWER

20W x 18D x 24H





# Desks



FR-WD

## FRANKLIN WRITING DESK

30W x 24D x 30H  
36W x 24D x 30H  
40W x 20D x 30H



FR-WD1

## FRANKLIN 1-DRAWER DESK

36W x 24D x 30H  
40W x 20D x 30H



FR-PD4

## FRANKLIN PEDESTAL DESK 4-DRAWER

42W x 24D x 30H



FR-PD2S2

## FRANKLIN PEDESTAL DESK

42W x 24D x 30H



AX-WD

## APEX WRITING DESK

36W x 24D x 30H  
40W x 20D x 30H



AX-WD1

## APEX 1-DRAWER DESK

36W x 24D x 30H  
40W x 20D x 30H



AX-WD2

## APEX 2-DRAWER DESK

36W x 24D x 30H  
40W x 20D x 30H



AX-PD2S2

## APEX 2-DRAWER PEDESTAL DESK

42W x 24D x 30H



LX-WD1

## LENOX DESK WITH 1-DRAWER

40W x 20D x 30H

# Desks



SAX-WD

## SAXMAN WRITING DESK

40W x 20D x 30H



SAX-WD1

## SAXMAN WRITING DESK WITH DRAWER

40W x 20D x 30H



SAX-WDH3

## SAXMAN WRITING DESK WITH HUTCH

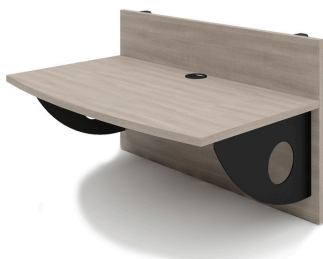
40W x 20D x 35H



AC-WD1

## ACACIA WRITING DESK

34W x 22D x 30H



BAX-HWD

## HOOK ON DESK

32W x 20D x 20H



DK-WD10C

## DECKER WRITING DESK

48W x 18D x 24H





# Wardrobes



FR-WR

## WARDROBE

30W x 24D x 72H  
36W x 24D x 72H



FR-WR1

## 1-DRAWER WARDROBE

36W x 24D x 72H



FR-WR2

## 2-DRAWER WARDROBE

36W x 24D x 72H



FR-WR3

## 3-DRAWER WARDROBE

36W x 24D x 72H



FR-1WR2

## 1 DOOR 2-DRAWER WARDROBE

24W x 24D x 72H

# Living Units

STYLE THAT WELCOMES YOU HOME

The living unit collection blends comfort, durability, and timeless style to support daily use in high-traffic student environments. From versatile lounge seating and functional coffee tables to coordinated end tables and media units, each piece is built for long-lasting performance and designed to create inviting community spaces. With smart construction and modern finishes, these furnishings make shared living areas both practical and welcoming.



# Coffee Tables



AX-CTR-01

## APEX ROUND COFFEE TABLE

30W x 30D x 18H



AX-CT

## APEX COFFEE TABLE

40W x 20D x 18H



AC-CTR

## ACACIA COFFEE TABLE

30W x 18H



DK-CT

## DECKER COFFEE TABLE

42W x 24D x 17H



EL-CTR

## ELLINGTON COFFEE TABLE

30W x 30D x 17H



LIFT-D-CTR

## 3 LEG COFFEE TABLE

36W x 36D x 18H



LX-CT-402018

## LENOX COFFEE TABLE

40W x 20D x 18H



RLY-CTR

## RILEY COFFEE TABLE

32W x 32D x 18H



SAX-CTR-01

## SAXMAN ROUND COFFEE TABLE

30W x 30D x 18H

# End Tables



AX-ET

**APEX END TABLE**  
20W x 20D x 20H



AX-CTT

**APEX C TRAY TABLE**  
18W x 18D x 25H



AX-ET-01

**APEX END TABLE WITH SHELF**  
18W x 18D x 26H



SAX-ETR-01

**SAXMAN ROUND END TABLE**  
20W x 20D x 20H



DK-ET

**DECKER END TABLE**  
20W x 20D x 20H



LIFT-D-ETR

**LIFT D END TABLE**  
20W x 20D x 20H



AC-ETR

**ACACIA END TABLE**  
20W x 20D x 20H



LIFT-D-AT

**LIFT D END TABLE**  
19W x 19D x 22H



# Media Units



AX-MU2

**APEX MEDIA UNIT**  
40W x 18D x 36H



AX-MU

**APEX MEDIA UNIT**  
40W x 18D x 24H



LX-MU-01

**LENOX MEDIA UNIT**  
48W x 19D x 22H



AC-MU

**ACACIA MEDIA UNIT**  
42W x 18D x 24H



SAX-MU

**SAXMAN MEDIA UNIT**  
48W x 18D x 30H



SL-MU

**STERLING MEDIA UNIT**  
40W x 18D x 24H



DK-MU

**DECKER MEDIA UNIT**  
48W x 14D x 20H



DYL-MU

**DYLAN MEDIA UNIT**  
48W x 24D x 22H



SMARTER FURNISHINGS

## Dining & Seating

DESIGNED TO BRING PEOPLE TOGETHER

Gather in style with our Dining & Seating collection—where form meets function. From sleek tables to comfortable, design-forward chairs, each piece is crafted to elevate everyday meals and memorable moments alike.



# Dining Tables



AX-DT

## APEX DINING TABLE

30W x 30D x 30H  
36W x 36D x 30H  
32W x 60D x 30H



AX-DTR-X

## APEX DINING TABLE ROUND WITH X BASE

36W x 36D x 30H



AX-CRT

## COUNTER HEIGHT TABLE

40W x 20D x 36H



AC-DT

## ACACIA DINING TABLE

36W x 36D x 30H  
48W x 30D x 30H



LIFT-E

## DINING TABLE

36W x 36D x 30H



SAX-DT

## SAXMAN DINING TABLE

36W x 36D x 30H



LX-DT

## LENOX DINING TABLE

36W x 36D x 30H



# Seating



DC-013

## BUNSEN CHAIR

21W x 18D x 33H- 18 SH



DC-035S

## UPHOLSTERED CHAIR WITH SLED BASE

18.5W x 22D x 31H- 18 SH



IO CHAIR

## IO CHAIR

18W x 19D x 31H



AHC-50371PXL-TSK

## TASK CHAIR

22W x 21D x 39H



DC-038S

## DERBY CHAIR

23W x 23D x 30H- 18 SH



DC-001

## WOOD LADDER BACK

18W x 21D x 35H- 18 SH



DC-010

## UPHOLSTERED METAL

20W x 22D x 33H- 18 SH



AHC-50371PXL-TSKNA

## ARMLESS TASK CHAIR

22W x 21D x 39H



DC-012

## BENT PLYWOOD

21W x 20D x 32H- 18 SH



MTPC

## METAL TWO POSITION CHAIR

17W x 17D x 32H- 18 SH



TPC

## WOOD TWO POSITION CHAIR

20W x 26D x 34H- 18 SH



TPC-WBUS

## WOOD UPHOLSTERED TWO POSITION CHAIR

20W x 26D x 34H- 18 SH

SEAT HEIGHT FOR DINING/DESK CHAIR IS 18"  
COUNTER STOOL SEAT HEIGHT IS 25"  
BAR STOOL SEAT HEIGHT IS 30"



# Seating



DC-013-4L

## **BUNSEN CHAIR WITH 4 LEGS**

21W x 18D x 33H- 18 SH



DC-013-AC

## **BUNSEN CHAIR WITH ARMS & CASTERS**

21W x 18D x 33H- 18 SH



TPC-UBS

## **WOOD UPHOLSTERED SEAT & BACK TWO POSITION CHAIR**

20W x 26D x 34H- 18 SH



SEAT HEIGHT FOR DINING/DESK CHAIR IS 18"  
COUNTER STOOL SEAT HEIGHT IS 25"  
BAR STOOL SEAT HEIGHT IS 30"

# Seating



CSB

## WOOD BACKLESS COUNTER STOOL\*

17W x 9D x 24H - 24 SH



MBCS

## METAL BACKLESS COUNTER STOOL\*

16W x 16D x 24H - 24 SH



CS-013-22

## METAL LEGS BACKLESS COUNTER STOOL

15W x 15D x 23H - 23 SH



AC-CS

## ACACIA COUNTER STOOL

22W x 24D x 41H - 24 SH



CS-038S

## DERBY COUNTER STOOL

23W x 24D x 36H - 24 SH



CS-038S

## DERBY BAR STOOL

20W x 21D x 42H - 30 SH



BS-010

## UPHOLSTERED METAL BAR STOOL

20W x 22D x 43H - 30 SH



CS-010

## UPHOLSTERED METAL COUNTER STOOL

20W x 21D x 37H - 24 SH



BS-012

## BENT PLYWOOD BAR STOOL

18W x 23D x 42H - 30 SH



CS-012

## BENT PLYWOOD COUNTER STOOL

22W x 20D x 38H - 24 SH



CS-IO

## IO COUNTER STOOL

22W x 24D x 41H - 24 SH

SEAT HEIGHT FOR DINING/DESK CHAIR IS 18"  
COUNTER STOOL SEAT HEIGHT IS 25"  
BAR STOOL SEAT HEIGHT IS 30"

\*AVAILABLE IN COUNTER OR BAR HEIGHT



# Upholstery

## ELEGANCE & COMFORT

Crafted for comfort and built to last, our upholstery collection blends refined textures with clean lines and thoughtful details. From plush sofas to tailored accent chairs, each piece is designed to bring warmth, style, and effortless sophistication to your space.



# LOUNGE CHAIRS



OCHARD PARK

OP-CHR

35W x 34.5D x 31H



DIANA

UDI-CHR

30.5W x 36D x 33H



JENSON

UJN-ACH

27.25W x 31D x 33H



GRAYSON

UGR-CHR

27.36W x 27.61D x 29.92H



# Lexington



ULXT-OTTO-233019

**LEXINGTON OTTOMAN**  
23W x 30D x 19H



ULXT-CHR

**LEXINGTON LOUNGE CHAIR**  
34.25W x 33.27D x 35H



ULXT-LUV

**LEXINGTON LOVESEAT**  
57.8W x 33.27D x 35H



ULXT-SOF78

**LEXINGTON SOFA**  
78W x 33.27D x 35H



ULXT-SOF78-CHAISE

**LEXINGTON SOFA WITH CHAISE**  
78W x 33.27D x 35H



ULXT-SEC-33

**LEXINGTON SECTIONAL 3 X 3**  
87W x 87D x 35H



ULXT-SEC-34

**LEXINGTON SECTIONAL 3 X 4**  
87W x 110D x 35H

# Princeton



UPR-OTT

## PRINCETON OTTOMAN

23W x 30D x 18H



UPR-ACH

## PRINCETON ARMLESS CHAIR

23W x 34.5D x 35.5H



UPR-CHR

## PRINCETON LOUNGE CHAIR

35.5W x 34.5D x 35.5H



UPR-LUV

## PRINCETON LOVESEAT

57.5W x 34.5D x 35.5H



UPR-SOF

## PRINCETON SOFA

80W x 34.5D x 35.5H



UPR-CHAISE

## PRINCETON CHAISE SOFA

61W x 80D x 35.5H

Available in Left and Right Options!



UPR-SEC-33

## PRINCETON SECTIONAL 3 X 3

85.3W x 85.3D x 35.5H



UPR-SEC-34

## PRINCETON SECTIONAL 3 X 4

85.3W x 110D x 35.5H



UPR-SEC-44

## PRINCETON SECTIONAL 4 X 4

110W x 110D x 35.5H



# Keystone



UKS-ACH

## KEYSTONE ARMLESS CHAIR

23W x 35D x 35H



UKS-CHR

## KEYSTONE LOUNGE CHAIR

35W x 35D x 35H



UKS-LUV

## KEYSTONE LOVESEAT

58W x 35D x 35H



UKS-SOF

## KEYSTONE SOFA

81W x 35D x 35H



UKS-SEC-33

## KEYSTONE SECTIONAL 3 X 3

87W x 87D x 35H



UKS-SEC-34

## KEYSTONE SECTIONAL 3 X 4

87W x 110D x 35H

Keystone is available with removable and replaceable fabric as a Smart Solutions

# Shift



USH-ACH

## SHIFT ARMLESS CHAIR

22W x 31.5D x 31.5H



USH-LCHR

## SHIFT LEFT ARM-FACING CHAIR

29W x 31.5D x 31.5H



USH-RCHR

## SHIFT RIGHT ARM-FACING CHAIR

29W x 31.5D x 31.5H



USH-CHR

## SHIFT TWO ARM CHAIR

36W x 31.5D x 31.5H



USH-LCWDG

## SHIFT LEFT CORNER WEDGE

32W x 31.5D x 31.5H



USH-RCWDG

## SHIFT RIGHT CORNER WEDGE

32W x 31.5D x 31.5H



USH-OTT

## SHIFT OTTOMAN

22W x 31.5D x 19H



USH-ROTT

## SHIFT RADIUS OTTOMAN

16W x 31.5D x 19H



USH-45IS-WDG

## SHIFT 45 INSIDE WEDGE

28.5W x 29.5D x 31.5H



USH-45OS-WDG

## SHIFT 45 OUTSIDE WEDGE

28.5W x 29D x 31.5H



USH-22IS-WDG

## SHIFT 22 INSIDE WEDGE

25.5W x 31D x 31.5H



# Edgewood



UEW-CHR

## EDGEWOOD CHAIR

59W x 36D x 26H



UEW-LUV

## EDGEWOOD LOVESEAT

59W x 36D x 26H



UEW-OTT

## EDGEWOOD OTTOMAN

23W x 30D x 19H



UEW-SOF

## EDGEWOOD SOFA

82W x 36D x 26H



UEW-SEC-33

## EDGEWOOD SECTIONAL 3 X 3

93.87W x 93.87D x 26H



UEW-SEC-34

## EDGEWOOD SECTIONAL 3 X 4

118.67W x 93.87D x 26H

# FINISH OPTIONS





---

# Laminate & Metal

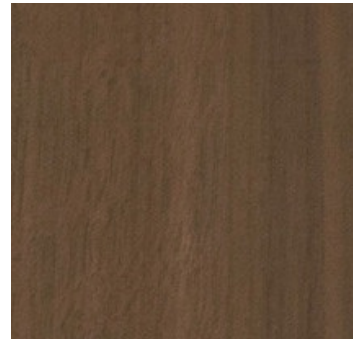
PASADENA OAK



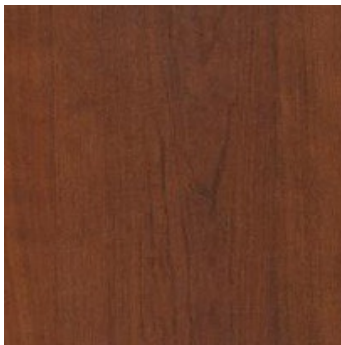
LOFT OAK



PINNACLE WALNUT



BROWN CHERRY



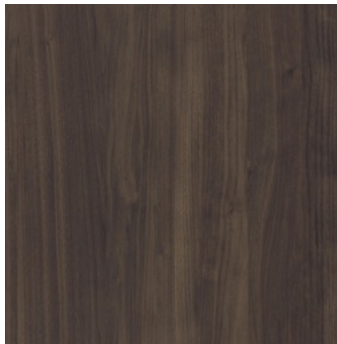
WEST ELM



GREY ELM



FLORENCE WALNUT



SKYLINE WALNUT

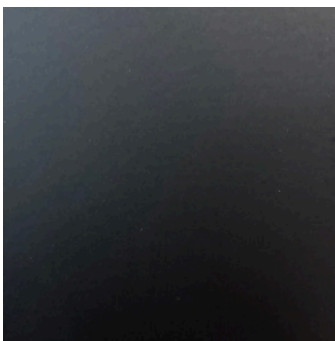


ESPRESSO

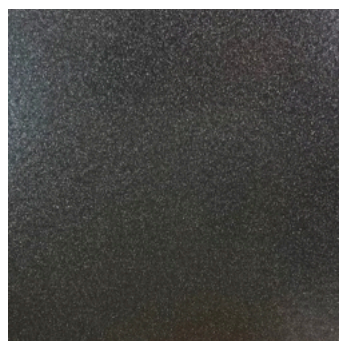


---

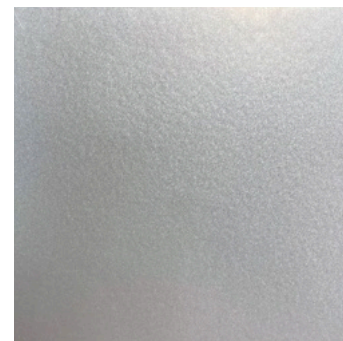
MATTE BLACK



GRAPHITE



PEWTER



# Vinyl & Woven Fabric

GRAPHITE



GREYSTONE



APACHE CHOCOLATE



CHESTNUT



AUGUSTA GREY



GUNMETAL



BLACK



PECAN



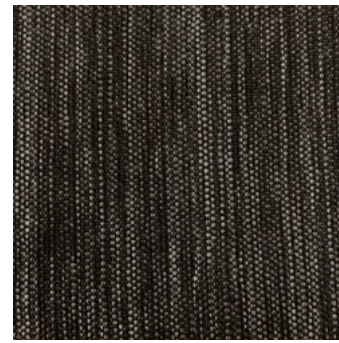
SLATE



CADET GREY



BLACK



LITE GREY



SAND



OCEAN





# Hardware & Pulls



ROUTED FINGER



SMP-5



SMP-3



SMP-7



SMP-15



SMP-1



SMP-16





# Accessories and Upgrades



FR-HT1-411224

## FRANKLIN HUTCH

41W x 12D x 24H



FR-HT2-411236

## FRANKLIN HUTCH 2-SHELF

41W x 12D x 36H



AX-HT-340707

## DESK HUTCH

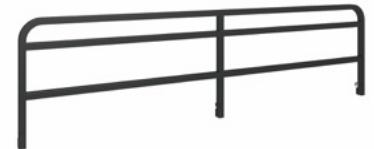
34W x 7D x 7H



CBY-001

## HOOK ON CUBBY

27W x 6D x 6H



SRL-

## SAFETY RAIL

SRL-B01  
65W x 1D x 17.95H

SRL-B02  
55.75W x 1D x 17.95H

## Upgrades:

LIGHT

PIANO HINGE

CORKBOARD

LATCH

OUTLET

HASP LOCK

MIRROR

CASTERS

# Warranty

## **CASEGOODS WARRANTY**

Smarter Furnishings warrants its product to be free of defects in materials and workmanship under normal use and service for a period of 25 years (3 shift) from the date of invoice for all casegood products. During this time period, Smarter Furnishings will repair or replace free of charge any product that proves to be defective.

The products are sold only with such warranty as is expressly provided for in the preceding paragraph no other warranties, express or implied. Smarter Furnishings expressly excludes any warranty of merchantability or fitness for a particular purpose. Smarter Furnishings shall not be responsible for incidental or consequential damages for any breach of warranty with respect to products sold hereunder.

## **MATTRESS WARRANTY**

Smarter Furnishings warrants its product to be free of defects in materials and workmanship under normal use and service for a period of 5 years from the date of invoice for all mattresses. During this time period, Smarter Furnishings will repair or replace free of charge any product that proves to be defective. The products are sold only with such warranty as is expressly provided for in the preceding paragraph no other warranties, express or implied. Smarter Furnishings expressly excludes any warranty of merchantability or fitness for a particular purpose. Smarter Furnishings shall not be responsible for incidental or consequential damages for any breach of warranty with respect to products sold hereunder.

## **UPHOLSTERY WARRANTY**

Smarter Furnishings warrants its upholstery to be free of defects in materials and workmanship under normal use and service for the following -12 years for the frame, 5 years for the foam, and 1 year for Smarter Furnishings standard fabrics. All other fabrics will carry the manufacturer's warranty. During these time periods, Smarter Furnishings will repair or replace free of charge any product that proves to be defective.

The products are sold only with such warranty as is expressly provided for in the preceding paragraph no other warranties, express or implied. Smarter Furnishings expressly excludes any warranty of merchantability or fitness for a particular purpose. Smarter Furnishings shall not be responsible for incidental or consequential damages for any breach of warranty with respect to products sold hereunder.

### **Warranty Disclaimers:**

Smarter Furnishing warranties do not apply to any item which is damaged due to misuse, neglect, alteration, abuse, or accident.



# Case Studies


Take a deeper look at some of the projects we have completed!







## Contact Us

 205.621.2502

 [Sales@SmarterFurnishings.com](mailto:Sales@SmarterFurnishings.com)

 [www.SmarterFurnishings.com](http://www.SmarterFurnishings.com)



smarter  
FURNISHINGS